

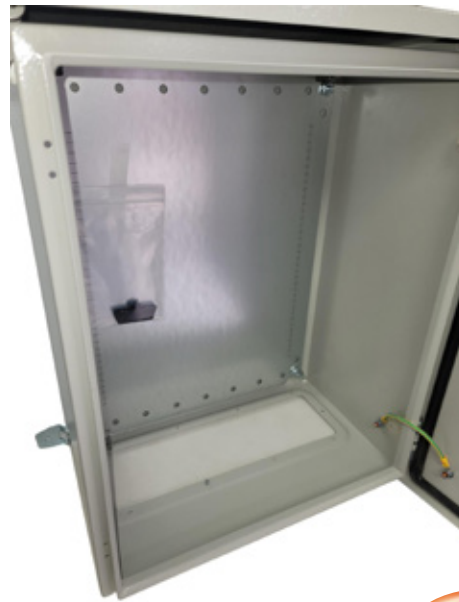
LP-AR8112302410

LanPro All Weather Outdoor Cabinet 8000 Series, for wall mounted, fan cooling, galvanized steel with electrostatic paint, ID Depth:215 mm Width: 360mm, Height 470mm

LPAR8112302410 _SS_ENB01W

Features

- **NEMA4:** These electrical cabinets are made out of cold-rolled carbon steel, using precise laser cutting and welding to assure physical integrity.
- **IP65 Waterproof:** LanPro's enclosure has a polymer strip sealing the edges as well as a lip that naturally routes the water out of the inside of the box.
- **Quality hardware:** Hinges are bi-directional and very resistant.
- **Secondary roof:** The "false" roof prevents the sun, water and rain from directly attacking the top of the cabinet
- **Backplane:** Our cabinets are equipped with a thick galvanized plate that can be detached
- **UL® certified cabinets** in stainless steel or cold steel in order to pass local ordinances.
- **Bottom plate:** LanPro can customize the bottom plate.



8000 Series

LP-AR8112302410

LanPro All Weather Outdoor Cabinet 8000 Series, for wall mounted, fan cooling, galvanized steel with electrostatic paint, ID Depth: 215 mm Width: 360mm, Height 470mm

The **LP-AR8112302410** 8000 Series of All Weather outdoor Cabinet wall mounted cabinet enclosures are designed to protect your sensitive network equipment from harsh environments, with waterproof and dustproof features to safeguard it from the elements, while still keeping the equipment secure outside.

A Characteristics

NEMA4: These electrical cabinets are made out of cold-rolled carbon steel, using precise laser cutting and welding to assure physical integrity. Finally is power coated to assure a good weather finish. It has a strong resistance to weather than average cabinets and keeping your switches, routers, modems, fiber and copper units better protected against rough weather.

IP65 Waterproof: LanPro’s enclosure has a polymer strip sealing the edges as well as a lip that naturally routes the water out of the inside of the box. We don’t work AGAINST the water rather helps to guide away from the inside. Our NEMA4 outdoor enclosure offer effective IP65 protection.

Quality hardware: Hinges are bi-directional and very resistant. Likewise, our locks are very tight in order to guarantee the tightness of the product. The doors are one of the parts that cause the most problems with cheap equipment and we try not to be our weakness.

Secondary roof: The “false” roof prevents the sun, water and rain from directly attacking the top of the cabinet and makes the interior temperature at noon 10 to 15 degrees lower than the surrounding environment. It doesn’t seem very important, but it is. Likewise, the phenomenon called stagnation is avoided by the angle of the roof. A small but great help to prolong the life of the cabinet and components.

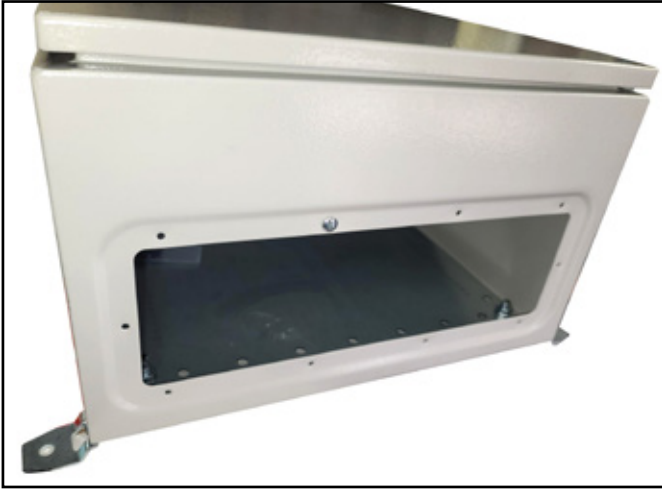
Backplane: Our cabinets are equipped with a thick galvanized plate that can be detached and makes the assembly of the equipment a breeze !! Din rail systems are a breeze to attach. Nothing simpler than working outside and then installing the entire assembly inside at once. Think outside the box with LanPro cabinets.

Bottom plate: LanPro can customize the bottom plate of the equipment here in the United States with 1 or 2 fans (with the voltage desired by the customer) with their respective rain covers. This radically reduces heating while using active products such as switches, modems, power supplies and others. We can also add hermetic cable glands or liquid tight fixtures on several styles.

UL®: We offer UL® certified cabinets in stainless steel or cold steel in order to pass local ordinances. They are properly grounded (box and door) and offer the necessary protection degree for municipal or institutional projects.

B Technical Parameters

ITEM	TYPE	TECHNICAL PARAMETER
Structure	Dimension	External Dimension: H×W×D 500mm x 400mm x 260mm Internal Dimension: H×W×D 470 mm x 360mm x 215mm
	Equipment Installation Method	19" standard rack
	Material	Galvanized steel with electrosatic paint
	Structure	Assembled
	Ingress Protection	Nema4
Temperature Control	Cooling	DC48V fan
Temperature	Temperature	Storage Temperature: -50°C ~ +70°C
		Transport Temperature: -50°C ~ +70°C
Humidity	Relative Humidity	5% ~ 100%



© How to order

LP-AR8112302410 LanPro All Weather Outdoor Cabinet 8000 Series, for wall mounted, fan cooling, galvanized steel with electrosatic paint, ID Depth:215 mm Width: 360mm, Heigh 470mm.